

Installation Guide

Belkin Secure KVM Terminal to RS-232 Tool Ver.1.02 – Administrator Guide Ver.2.0

List of supported SW versions for the KVM Terminal Tool setup:

All SKVM with the below firmware and software versions:

- EX_SC_15220623_PP_17150523
- SC446_18160622-PP446_13130622

Compatible models include:

Universal 2nd Gen - Secure KVM

F1DN102KVM-UN-4	F1DN204KVM-UN4M	F1DN202KVM-UNN4
F1DN104KVM-UN-4	F1DN204KVM-UN-4	F1DN204KVM-UNN4
F1DN108KVM-UN-4	F1DN208KVM-UN-4	F1DN204KVMUNN4Z
F1DN116KVM-UN-4	F1DN102KVM-UNN4	
F1DN202KVM-UN-4	F1DN104KVM-UNN4	
F1DN202KVMUNN4M	F1DN104KVMUNN4Z	
F1DN204KVMUNN4M	F1DN108KVM-UNN4	

Universal 2nd Gen - Modular Secure KVM

F1DN102MOD-BA-4	F1DN102MOD-HH-4	F1DN202MOD-PP-4
F1DN104MOD-BA-4	F1DN102MOD-PP-4	F1DN204MOD-DD-4
F1DN108MOD-BA-4	F1DN104MOD-DD-4	F1DN204MOD-HH-4
F1DN202MOD-BA-4	F1DN104MOD-HH-4	F1DN204MOD-PP-4
F1DN204MOD-BA-4	F1DN104MOD-PP-4	
F1DN208MOD-BA-4	F1DN202MOD-DD-4	
F1DN102MOD-DD-4	F1DN202MOD-HH-4	

Installation Guide

Hardware Requirements:

- Belkin Secure KVM M series
- Windows-compatible PC (Windows 10/11 8GB RAM)
- USB-toRJ12 cable (F1DN-RC-USB-CBL)
 - To create your own cable, please refer to the Belkin Administrator Manual found at: <https://www.belkin.com/products/product-resources/cybersecurity-skvm/resources/>.

Software Requirements:

- OS: Windows 10/11 8GB RAM
- Belkin SKVM M series Terminal to RS-232 Software version 1.02

Installation Instructions:

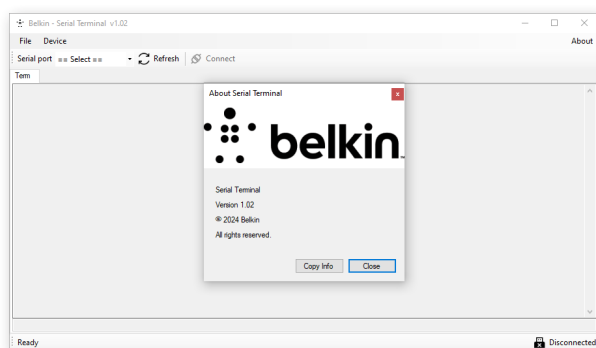
1 Download from Belkin Resource Center at:

<https://www.belkin.com/products/product-resources/cybersecurity-skvm/resources/>

- Install the application: Belkin_RS232Term_setup_1.02.exe
- Choose the location to install files and select “Next”
- Create a desktop shortcut
- Select “Install” to begin and follow the installation wizard to complete the process

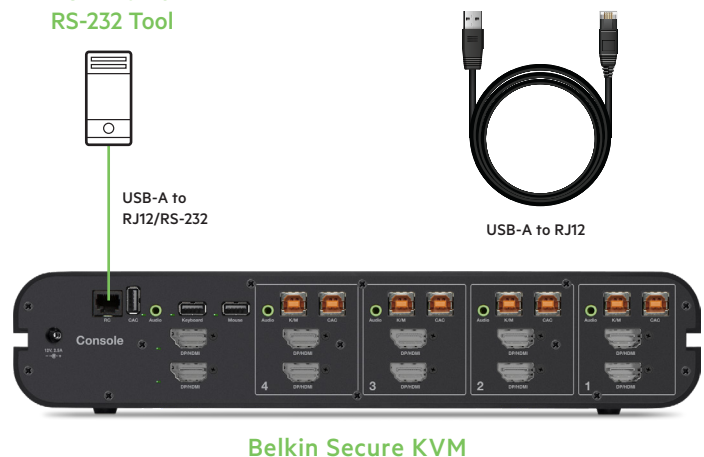
2 Launch the application

- A window will open – Click About on the upper right side to verify the version.



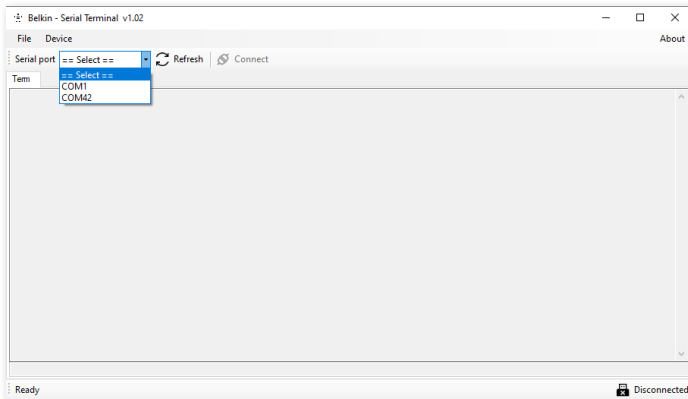
- Connect the Administrator PC and SKVM as follows:

Administrator PC/ Terminal to RS-232 Tool

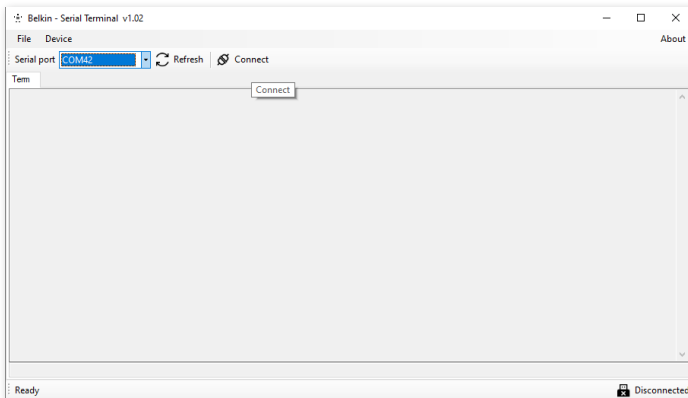


- Using the USB-A to RJ12/RS-232 cable, connect USB-A to the PC and RJ12/RS-232 to the RCU port on the SKVM.
- Connect the AC power cable to the SKVM.

e. Select an available COM port.

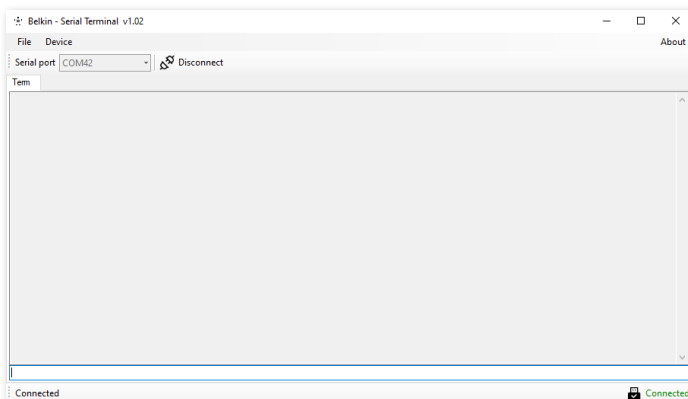


f. Once you have selected the correct COM port, click “Connect”.



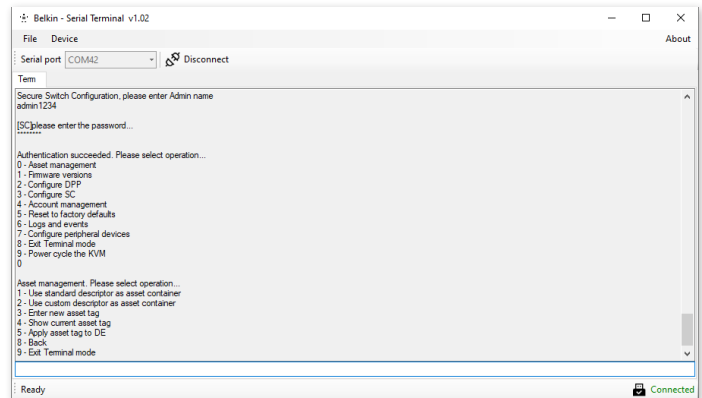
g. Look for the two indications of connectivity:

- “Connect” icon will change to “Disconnect”.
- On the lower right corner, the status will change to green “Connected”.



h. Enter the Administrator username followed by the password. Wait approximately 10 seconds for the application to connect and collect information from the KVM.

- If logging into Terminal Mode for the first time, use the following values:
 - > Username: admin1234
 - > Password: 1234ABCDefg!@#
- Password must be changed upon initial connection.



IMPORTANT: The main admin user account and password cannot be reset or deleted. If the password is mistyped or misplaced, it cannot be recovered. If you misplace the password, your SKVM/SKM will continue to function with the last setting changes made to it.

In the event of an error message during login, follow these steps:

1. Disconnect the USB-A to RJ11 cable from the PC side.
2. Power cycle the SKVM.
3. Reconnect the USB-A to RJ11 cable back to the PC.
4. Launch the application.