

Initial setup instructions for Belkin INC007 using DisplayLink Manager

[How do I set up the extended display using the USB-C® dock of my MacBook® with macOS® Catalina \(10.15 and above\)?](#)

[How do I set up the extended display using the USB-C dock of my MacBook with macOS Mojave \(10.14 and below\)?](#)

[How do I set up the extended display using the USB-C dock of my Windows 10® host?](#)

[I am trying to download the DisplayLink Manager driver in my Windows host. What should I do if it's not downloading?](#)

How do I set up the extended display using the USB-C® dock of my MacBook® with macOS® Catalina (10.15 and above)?

To get extended displays of MacBook with macOS Catalina, you must follow the steps below.

First, update your **Security & Privacy** settings in your Mac® using the instructions below:

Step 1:

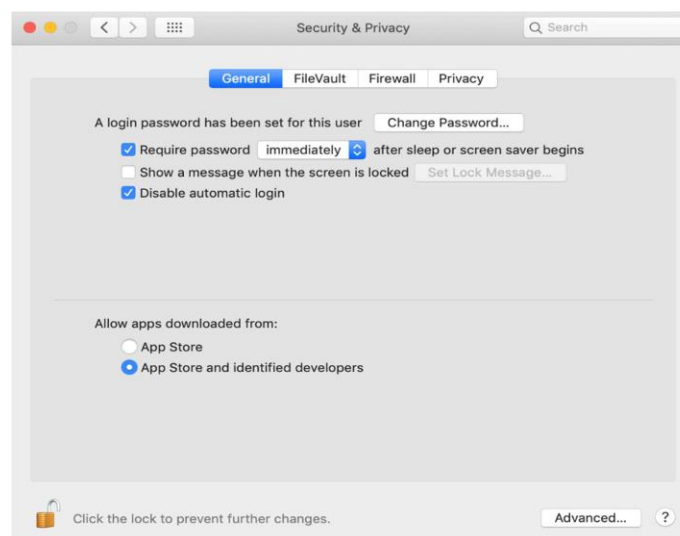
Click the **Apple** icon and select **System Preferences** from the dropdown menu.

Step 2:

Select **Security & Privacy** and then go to the **General** tab.

Step 3:

Under **Allow apps download from**, make sure that **App Store and identified developers** option is selected.



Secondly, download the DisplayLink Manager driver from the [DisplayLink website](#). Make sure to download the driver that is compatible with macOS Catalina 10.15 and above. Once downloaded, install the app or driver.

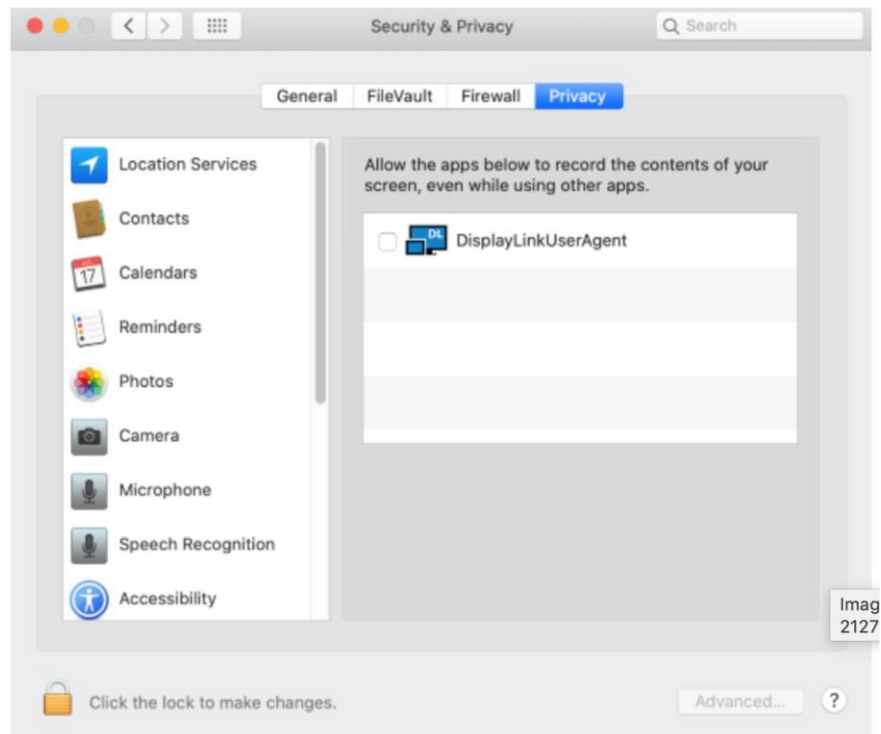
After completing the installation, follow the instructions below on your Mac.

Step 1:

Click the **Apple** icon and select **System Preferences** from the dropdown menu.

Step 2:

Select **Security & Privacy** and then go to the **Privacy** tab.



Step 3:

Click on the **Lock** icon to make changes.

Step 4:

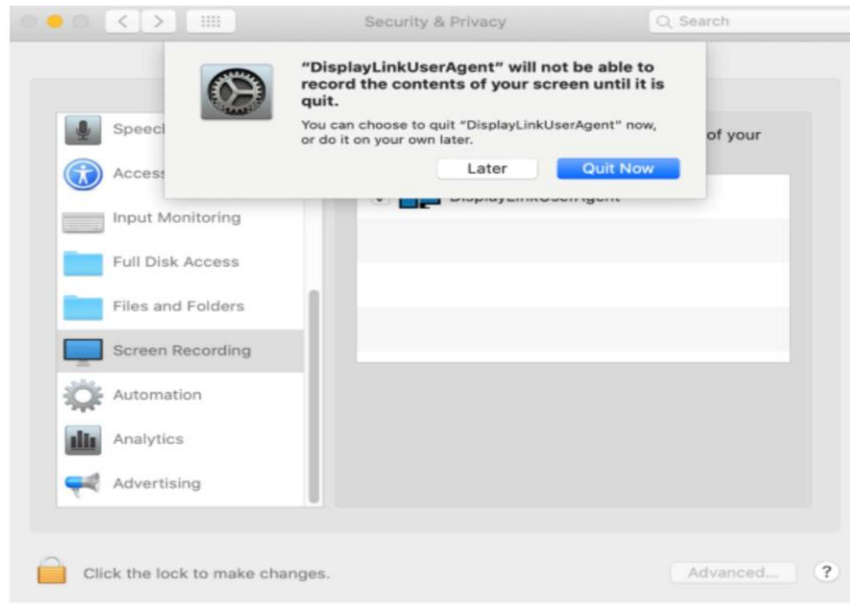
Authenticate the changes by using your login details.

Step 5:

Go to **Screen Recording** from the left menu and then check the box next to **DisplayLinkUserAgent**.

Step 6:

Click on the **Lock** icon again to save changes, then click **Quit Now**.



A reboot may be necessary.

How do I set up the extended display using the USB-C dock of my MacBook with macOS Mojave (10.14 and below)?

To get extended displays of MacBook with macOS Mojave (10.14 and below), you have to follow the steps below:

First, update your **Security & Privacy** settings in your Mac® using the instructions below:

Step 1:

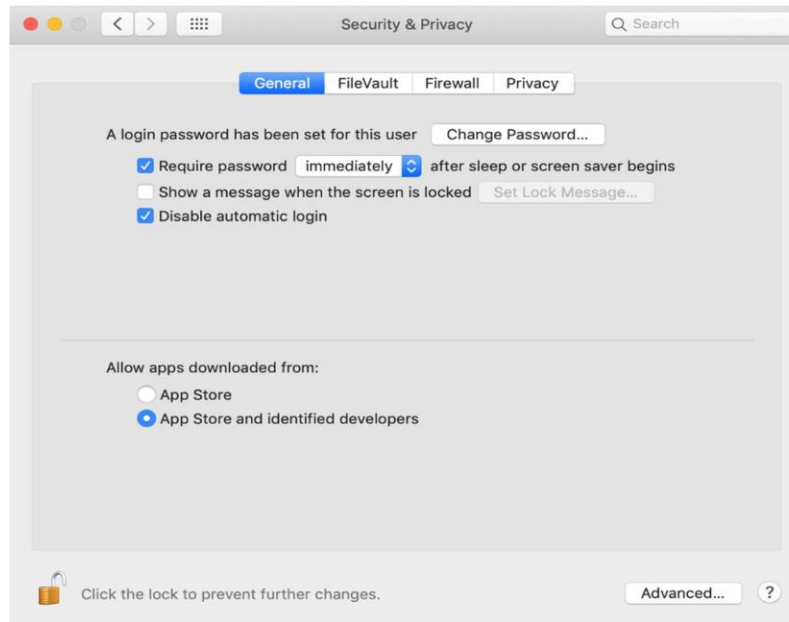
Click the **Apple** icon and select **System Preferences** from the dropdown menu.

Step 2:

Select **Security & Privacy** and then go to the **General** tab.

Step 3:

Under **Allow apps download from**, make sure that **App Store and identified developers** option is selected.



Secondly, download the DisplayLink Manager driver from the [DisplayLink website](#). Make sure to download the driver that is compatible with your macOS. Once downloaded, install the app or driver.

How do I set up the extended display using the USB-C dock of my Windows® 10 host?

You must verify if your host is ARM-based or x86. Below is the process to find it.

Step 1:

On your Windows computer, go to the **System Information** page and verify the **System Type**.

In the sample image below, the System Type is an **ARM**-based system.

Item	Value
OS Name	Microsoft Windows 10 Home
Version	10.0.18362 Build 18362
Other OS Desc...	Not Available
OS Manufactu...	Microsoft Corporation
System Name	DESKTOP-1N130LP
System Manuf...	Microsoft Corporation
System Model	Surface Pro X
System Type	ARM64-based PC
System SKU	Surface_Pro_X_1876
Processor	Microsoft SQ1 @ 3.0 GHz, 2995 Mhz, ...
BIOS Version/...	Microsoft Corporation 3.477.140, 4/7...
SMBIOS Version	3.2
Embedded Co...	255.255
BIOS Mode	UEFI
BaseBoard Ma...	Microsoft Corporation
BaseBoard Pro...	Surface Pro X
BaseBoard Ver...	Not Available
Platform Role	Slate
Secure Boot St...	On
PCR7 Configur...	Elevation Required to View
Windows Dire...	C:\windows
System Direct...	C:\windows\system32
Boot Device	\Device\HarddiskVolume1
Locale	United States
Hardware Abs...	Version = "10.0.18362.387"

Step 2:

Download the DisplayLink Manager driver. If your System Type is **ARM**-based, download the driver [here](#). If it is **x86**-based, download the driver [here](#). Once downloaded, install the app or driver.

I am trying to download the DisplayLink Manager driver in my Windows host. What should I do if it's not downloading?

For Windows, make sure to download first the DisplayLink Manager driver and install it. Restart the Windows computer, and then connect your dock to the computer.